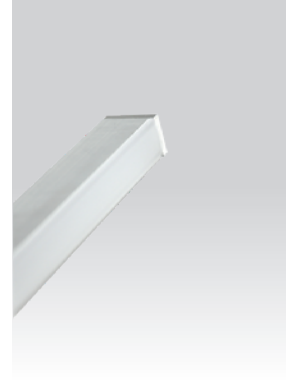
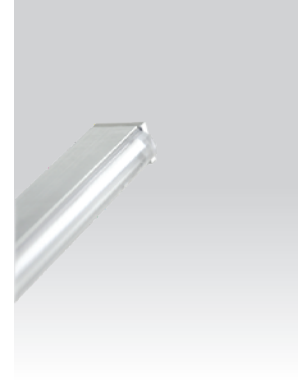


Project name: _____

Type: _____



Wide flood



Narrow spot

Miniature profile for architectural lighting applications. This light element has almost limitless applications where uniform diffuse light is desired.

Luminaire characteristics: Luminaire only
Input load: 4.6W/ft. (LED only)
Lumens: 150 to 175 lm/ft. (delivered for 3000K)
Luminaire efficacy: 23 to 27 lm/W (3000k)

Source: LED module (LM-80 tested)
 3000K, 3500K or 4000K : 90CRI
Lumen maintenance: 70% of initial lumens at 50 000 hours (L70), (LM-79 tested).

Optics:
Wide flood: 82° with frosted diffuser.
Narrow spot: 9° with clear beam lens with film.

Mounting: Full length mounting slot for adjustable mounting system. Mounting screws and support system included. 3ft long power cable included.

Material:
 Body: Aluminum extrusion
 End caps: Die-cast aluminum

Electrical: See remote LED driver page 2.

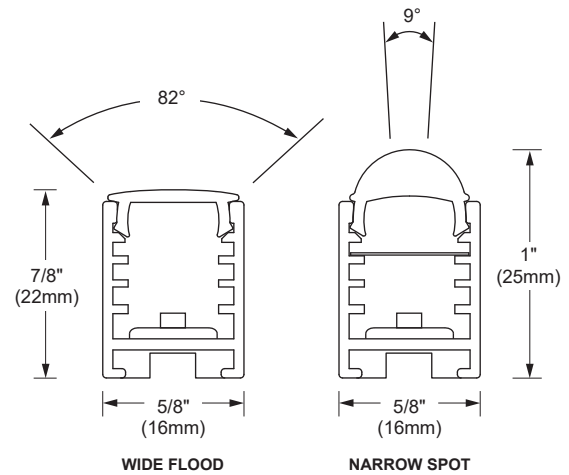
Dimming: See remote LED driver page 2.

Finish: White RAL9003 or gray RAL9006 painted finish.
 RAL custom color available upon request.

Weight: TBC.

Warranty: 5 year limited warranty.

Certification: cULus listed for dry location.



SECTION VIEW



FRONT VIEW

Project name: _____

Type: _____

ORDERING INFO

MODEL	LENGTH	LAMPING	OPTIC	MOUNTING	FINISH
NOMINAL LENGTH _____ 06" to 96" 02" increments		LAMPING <input type="radio"/> LD3 - 3000K <input type="radio"/> LD35 - 3500K <input type="radio"/> LD4 - 4000K	OPTIC <input type="radio"/> FD - Frosted flood <input type="radio"/> CL - Clear narrow	MOUNTING <input type="radio"/> A - 90° <input type="radio"/> B - Wall <input type="radio"/> C - Invisible	FINISH <input type="radio"/> 01 - White <input type="radio"/> 10 - Gray
REMOTE POWER SUPPLY OPTION (TO BE ORDERED SEPARATELY) Requirement for one (1) fixture (LED only) : 4.6W/ft, 24VDC <input type="radio"/> 4450-0024-072-UNV-D10 <input type="radio"/> 4551-0024-080-120-LTE <input type="radio"/> 4448-0024-100-UNV-D10					

REMOTE LED DRIVER OPTION
(TO BE ORDERED SEPARATELY)

Watts	Min-Max	Voltage	Rated	Dimming protocol	Box dimensions	Max distance 16AWG	Code
72	Up to 15ft	120-277V	Indoor	0-10V	8" X 8" X 4" (203 X 203 X 102mm)	70ft (21m)	4450-0024-072-UNV-D10
80	1ft - 16ft w/o dim 74" - 17ft w/ dim	120V	Outdoor	Leading and trailing edge (ELV and TRIAC)	14" X 5" X 2" (356 X 127 X 51mm)	70ft (21m)	4551-0024-080-120-LTE
100	3 - 21ft	120-277V	Indoor	0-10V	10" X 8" X 4" (254 X 203 X 102mm)	40ft (12m)	4448-0024-100-UNV-D10

Project name: _____

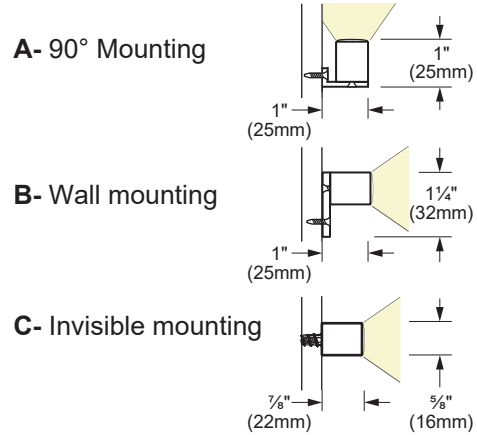
Type: _____

LENGTHS

Nominal length	Actual length	Input Amps 24V DC	Nominal length	Actual length	Input Amps 24V DC
6"	6 5/8" (175mm)	0.10	52"	51 3/4" (1314mm)	0.82
8"	8 7/8" (225mm)	0.13	54"	53 5/8" (1362mm)	0.86
10"	10 3/4" (273mm)	0.16	56"	55 5/8" (1413mm)	0.89
12"	12 3/4" (324mm)	0.19	58"	57 5/8" (1464mm)	0.92
14"	14 3/4" (375mm)	0.22	60"	59 1/2" (1511mm)	0.95
16"	16 5/8" (422mm)	0.25	62"	61 1/2" (1562mm)	0.98
18"	18 5/8" (473mm)	0.29	64"	63 3/8" (1610mm)	1.01
20"	20 1/2" (521mm)	0.32	66"	65 3/8" (1661mm)	1.05
22"	22 1/2" (572mm)	0.35	68"	67 3/8" (1711mm)	1.08
24"	24 1/2" (622mm)	0.38	70"	69 1/4" (1759mm)	1.11
26"	26 3/8" (670mm)	0.41	72"	71 1/4" (1810mm)	1.14
28"	28 3/8" (721mm)	0.44	74"	73 1/8" (1857mm)	1.17
30"	30 1/4" (768mm)	0.48	76"	75 1/8" (1908mm)	1.20
32"	32 1/4" (819mm)	0.51	78"	77" (1956mm)	1.24
34"	34 1/8" (867mm)	0.54	80"	79" (2007mm)	1.27
36"	36 1/8" (917mm)	0.57	82"	81" (2057mm)	1.30
38"	38 1/8" (968mm)	0.60	84"	82 7/8" (2105mm)	1.33
40"	40" (1016mm)	0.63	86"	84 7/8" (2156mm)	1.36
42"	42" (1067mm)	0.67	88"	86 3/4" (2203mm)	1.39
44"	43 7/8" (1114mm)	0.70	90"	88 3/4" (2254mm)	1.43
46"	45 7/8" (1165mm)	0.73	92"	90 3/4" (2305mm)	1.46
48"	47 7/8" (1216mm)	0.76	94"	92 5/8" (2353mm)	1.49
50"	49 3/4" (1264mm)	0.79	96"	94 5/8" (2403mm)	1.52

MOUNTING SYSTEM

* For each mounting option all screws and supports system are included

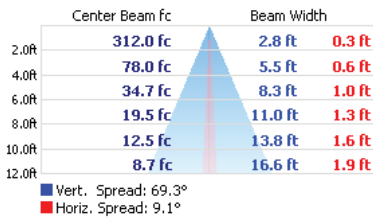


Lengths	# Of mounting supports included
6" TO 24"	2x
26" TO 48"	3x
50" TO 72"	4x
74" TO 96"	5x

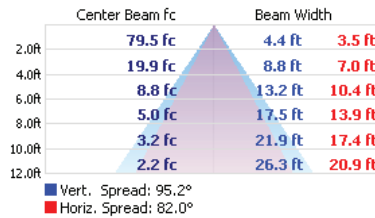
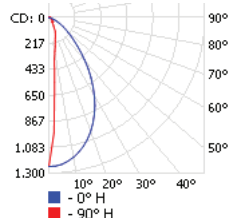
TECHNICAL DATA

Photometric performance is measured at an accredited independent laboratory in accordance with IESNA LM-79. Nominal data shown. Visit sistimalux.com for complete photometric data. Photometric data based on the 4' (48") module assembly.

LOAD (W)	CCT (K)	CRI	OPTIC	LUMENS (lm)	EFFICACY (lm / w)	MAX CANDELA (cd)	MODEL
26W	3000K	90	Narrow spot	600	23	1245	7050-48-LD3-CL
			Wide flood	705	27	315	7050-48-LD3-FD



3000K - 90 CRI - Clear Narrow Spot



3000K - 90 CRI - Frosted Wide Flood

